

# Solutions

Winter 2014/15

[www.solutionsforaccounting.co.uk](http://www.solutionsforaccounting.co.uk)



## SAGE 200 v2015 ... IT'S HERE!

Sage 200 v2015 promises to deliver an extraordinary customer experience, as it was built directly in response to customer feedback.

Sage's research shows that improving usability is of key importance to customers, so the new Sage 200 v2015 is packed with features which should make your life easier when using the software.

The biggest change in this release is the more modern and efficient new interface. Other improvements include new reporting capabilities, top wish list items such as new features for project accounting and fixed assets, compliance with the latest legislation plus the latest version of Sage CRM.

As a Top 10 Sage Business Partner, Solutions for Accounting can provide expert advice on all Sage products, including Sage 200 v2015, and our Sage accredited technicians can integrate any new software into your business with the minimum of disruption to operations.

**Give us a call today on 0115 840 5075 or visit [www.solutionsforaccounting.co.uk](http://www.solutionsforaccounting.co.uk)**

### STAY IN CONTROL



Save time by managing payroll, pensions and payslips in one place with the latest version of Sage 50 Payroll.

The new-improved system allows you to stay in control of payroll costs and will report any discrepancies, while additional modules can be added to deal with both private and public sector pensions.

*See page 5 for the full story.*

.....

### REPORTING THE FACTS

Making informed operational decisions from the vast quantity of information your business generates each day, week and month can be challenging but Panintelligence software makes this data easier to digest.

The business intelligence software is accessed via a web browser and creates visually stunning interactive charts from all modules in Sage 200, which can be drilled down to the information you need.

*See page 6 for the full story.*

## Welcome to the Solutions for Accounting newsletter

In this issue, we cover software developments, our latest company news and advice on how to get the best out of your existing Sage software.

2014 has been an extremely busy year for us and our team has grown substantially. Vanessa and Susan joined our sales team and Steven started as our first apprentice. Since then, we've recruited five more apprentices - Grant (support), Matthew (development), Jess (admin), Ethan (internal IT) and Gavin (support)! I'm delighted to say that Steven is now Sage 200 accredited and Grant is now able to support Act!, Sage CRM and also provide reporting assistance for Sage 200.

Additionally, Mark has joined our implementation team bringing many years of financial experience to our business.

Sage 200 v2015 is due for release in February and looks to be one of the best releases yet. Sage CRM v7.3 has recently been released and we've already seen the launch of Sage 50 v2015 and Act! v17 - both of which are providing plenty of benefits to users. On Tuesday 28 April we'll be holding our Solutions Showcase at the National Space Centre in Leicester, where you'll be able to see all of these great new products in action. Look out for further details on [www.solutionsforaccounting.co.uk](http://www.solutionsforaccounting.co.uk)

In addition, read about one of our partnerships, Panintelligence, and its business intelligence software for Sage 200; our latest Sage 200 Excel Journal Entry Module; and how we've helped one of our Sage 200 clients to break into new global markets.

I hope you enjoy this newsletter and if you have any feedback, please contact me directly - I'd love to hear from you.

Sarah Newman  
Marketing Coordinator  
[sarahn@solutionsforaccounting.co.uk](mailto:sarahn@solutionsforaccounting.co.uk)



## Solutions Showcase 2015 set to be out of this world!

Our annual exhibition, showcasing the latest software developments, is back and this year it will be held at an exciting new venue.

Solutions Showcase 2015 will take place on Tuesday 28 April, at The National Space Centre in Leicester.

Visitors to the day-long exhibition will be able to attend a variety of seminars on the latest product information about Sage 50 and Sage 200, as well as providing insights into new technology and expert advice on a wide range of software solutions.

The Solutions for Accounting team will also be on hand to guide you around the event and answer any queries you may have. A full list of exhibitors will be available soon.

Lunch and refreshments will be provided and you will even have the chance to look around the Space Centre museum at the end of the day.

**A full detailed agenda will be available soon but in the meantime, register and see the full list of seminars at [www.solutionsforaccounting.co.uk/events](http://www.solutionsforaccounting.co.uk/events) or contact Sarah on 0115 840 5075, [sarahn@solutionsforaccounting.co.uk](mailto:sarahn@solutionsforaccounting.co.uk)**





## Sage 200 Excel Journal Entry Module

Our upgraded module for Sage 200 is now even easier to use.

Launching from directly within the Excel tool bar, the Excel Journal Entry Module connects directly to your Sage system, allowing you to insert journals into Sage 200 quickly and easily.

### Features

- Import journals created in Excel straight into Sage 200
- Search the Nominal Ledger quickly and select single or multiple nominal codes
- Dropdown lists for nominal codes and tax codes for greater accuracy
- Allows you to do reverse entries or recurring entries
- Multi-user licensing means you buy once and then as many users as needed can create journals
- In 'simple' mode the assistance forms no longer show - allowing users to paste information directly into the spreadsheet

### Benefits

- Avoids errors as only valid journals can be created
- Keeps costs down as single purchase covers multiple users
- Speeds up processing
- Simple to use as it mirrors Sage's functionality

**The Sage 200 Excel Journal Entry Module is part of the Solutions Additions range of Sage 50 & Sage 200 Add-ons developed by our in-house team of Sage Developers. Find out more about our modules by contacting Kathy directly on 0115 840 5075 or visiting our dedicated website at [www.solutionsadditions.co.uk](http://www.solutionsadditions.co.uk)**

	AccountNumber	CostCentre	Department Name	Narrative	TaxType	TaxCode	Debit	Credit	Tra
5	31100	SAL	COM	Sales - Kitchens Components	Not Applicable		10	0	
6	31100	SAL	BES	Sales - Bespoke Kitchens	Not Applicable		0	10	
7	29200			Unauthorised Purchases	Not Applicable		0	10	
8	29110			P/L Retentions for Job Costing	Not Applicable		0	5	
9	02100			Nick Test 2	Not Applicable		15	0	Prc

## Meet Sentley



**Sentley Wilson is Support Technician at Solutions for Accounting.**

### What's your favourite thing about working at Solutions for Accounting?

Achieving results. When we manage to solve an issue for a client or make their life easier.

### Tell us about yourself ...

I'm married with two dogs and, in my spare time, I enjoy fishing, gardening and walking (mainly to the pub).

### Who or what makes you laugh?

Older comedies such as Blackadder, Only Fools & Horses and It Ain't Half Hot Mum.

### What's your favourite book?

That's a tricky one. One of the best books I've read is Mike Reid's autobiography, T'rific. It was not at all how I expected it to be.

### What would you buy if you were given £100,000?

A new Range Rover Sport.

### Other than this one, what's your ideal job?

I'd love to work for a Formula 1 team or something outdoors.

### What's your poison?

Normally a real ale or red wine. I also like scotch, a nice port, and a gin & tonic on a hot day.

### What's your most irritating habit?

I'm a little loud in the office sometimes.

### What's your biggest extravagance?

In my younger, care-free days (before I had a mortgage), I bought an old camper van on a whim. It ended up being scrapped.

### Who's on your fantasy dinner party list?

Rowan Atkinson, River Monsters presenter Jeremy Wade, Tim Berners-Lee and Rachael Riley.

## A class act!



Say hello to Act! v17, the newest and most intelligent version of the best-selling contact and customer manager software system.

The enhanced, intelligent, integrated Act! v17 e-marketing experience allows you to stay better connected with your audience whether attracting new customers, or getting more from existing relationships.

Optimise your workforce and drive productivity with features including Contact Timeline which allows for a dynamic view of all your contact interactions, while the new Smart Task automation and numerous usability, installation and configuration improvements will help you save time and stay organised.

### New features at a glance:

- Enhanced Act! e-marketing, including Team access, Lead Capture, and new Smart Task options
- Discover the new, modern look of Act! and easily access resources and tools, helping you get the most out of your software
- Productivity enhancements such as new Outlook® sync options, integration with popular business tools, helping you save time and stay organised

For more information on Act! v17 call Solutions for Accounting on 0115 840 5075.

# New Year, new Sage 200 v2015

On our front cover we introduce you to the new Sage 200 v2015. Here, we take a look at the exciting new features of Sage 200 v2015 which will make life easier for you and your team.

### New user interface

The new user interface gives a modern look and feel to the product. Great usability with improved navigation also enables greater efficiency and speed, while there's more flexibility as you can choose how you get to the areas of the product you use most.

### Brand new desktop

Start-up time is now three times quicker so you will see immediate performance improvements. One click access to the Sage 200 Ideas Hub, help files, the spooler and desktop configuration and you can even choose the preferred colour theme.

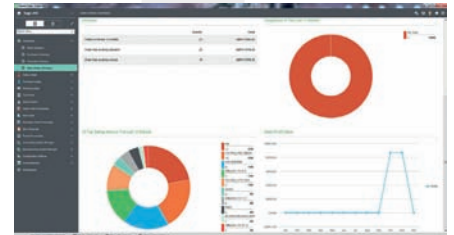
### New application homepage

The new homepage allows you to have immediate and one-click access to the areas of the product that you want to use, improving navigation and enabling greater efficiency.

### Colour coded companies

Sage has introduced the ability to add the company name and coloured stripe to the banner on every form. A new activity bar along the bottom of the desktop also allows you to quickly navigate between any open lists, form, workspace or process map. Sage has re-written the favourites to deliver a more intuitive and familiar experience with one click access from anywhere in the application. Favourites are integrated into the menu system via a simple toggle and you now have the option to edit favourites directly from the menu, as well as the ability to create new folder structures.

Favourites are also now stored within the database which means they are retained throughout an upgrade and can be imported and exported at any time.



### New desktop lists

- Enhanced performance
- Easier to use
- Upgrade-safe favourites
- Consistency of available fields within column picker
- Flexibility to create bespoke desktop lists

### Summary pages at a glance - better visibility of the KPIs

Dynamic graphics enable quick and easy interpretation by date, with data available remotely so key business metric can be accessed on the go.

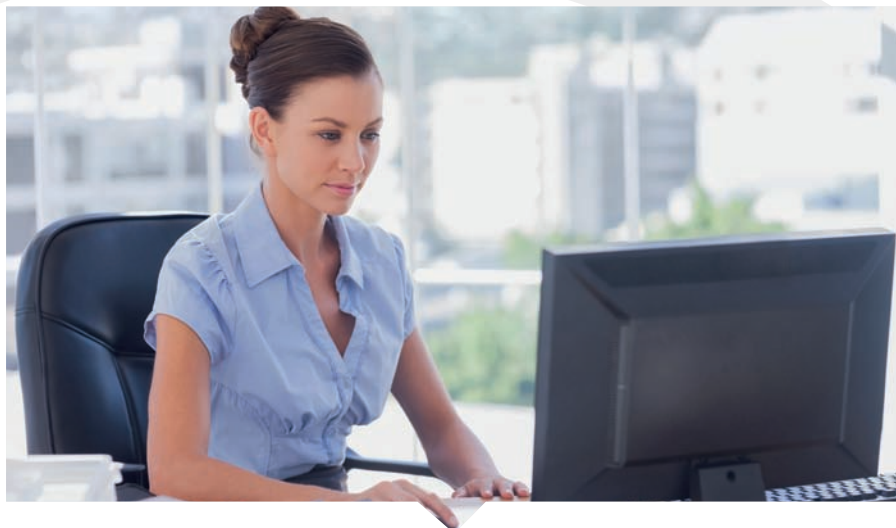
### Excel reporting for Sage 200

Sage 200 Excel reports allows customers to report on data and performs more detailed analysis using familiar formats within Excel. It allows customers to quickly extract the data required and filters, formats, pivots and runs deeper analysis using the familiar format with Excel.

### Fixed assets register

Fixed assets register enables you to effectively record assets and manage depreciation within Sage 200.

**If you think Sage 200 v2015 may be right for your business or you would like to discuss upgrading from your existing software, call us today on 0115 840 5075.**



## New Sage 50 Payroll available now

With more legislation and the increased demands of modern life, we're ready with new ways to take care of your payroll and pension processes, keeping you and your staff in complete control.

The latest version of Sage 50 Payroll provides you with the tools to easily spot mistakes and drill down to the information you need. The option to add extra modules, as and when you need them, also helps you to save time by managing payroll, pensions and payslips all in one place.

### Enhancements to the core product

- Set and manage variances to control overtime and see the issues which need addressing
- Control how much you pay in areas such as overtime or net pay to keep control of your payroll costs
- Understand the information in your reports, where the information comes from and what you need to do
- Reduce errors by letting the software find discrepancies

### Automated Payslip Module

Automated Payslips is a separate paid-for module, available on monthly subscription, to be used in conjunction with Sage 50 Payroll. Customers will be able to get their payslips printed and posted, or hosted online at the click of a button.

### Pensions Module - NHS Pensions

Public sector pensions typically operate on a tiered basis. Rather than using a single rate of deduction to all members, the scheme uses a tiered basis and the employee contribution percent is set according to employee salary bands.

Sage 50 Payroll alone does not support this 'tiered' structure and customers who choose to use the program to manage their tiered pension scheme typically use manual workarounds and manage certain aspects completely offline. This is a time consuming process, open to human error and identifies a shortfall in product capability.

### The Pensions Module will solve this and allow customers to:

- Set up an NHS pension and support the tiered structure
- Define and calculate pensionable pay for specific groups of employees
- Track pensionable hours for employees
- Automatically assess, maintain, and re-assess tiers for employees
- Produce or source data to populate standard NHS reports

Call Solutions for Accounting on 0115 840 5075 for further details.

## Spindle Document Capture



### What is Spindle Document Capture?

Spindle Document Capture is a document capture software solution that works directly with Sage 200.

Whenever there's a need in your business for capturing, archiving and viewing documents from Sage 200, Spindle Document Capture will take care of it, helping you to transform your document management processes.

### Save time, money and office space

Documents can be instantly viewed within Sage 200 to help you save a significant amount of time spent filing and searching for documents. Not only will this help you to improve your business efficiency, it will also help you to reduce costs and free up storage space.

### Achieve a truly paperless office

Use Spindle Document Capture in conjunction with your outgoing document distribution solution, Spindle Professional, and you can create a truly paperless office. It will also help you to cut down on your paper usage for incoming and outgoing communications, reducing the environmental impact of your business.

For more information on Spindle Document Capture call Solutions for Accounting on 0115 840 5075.



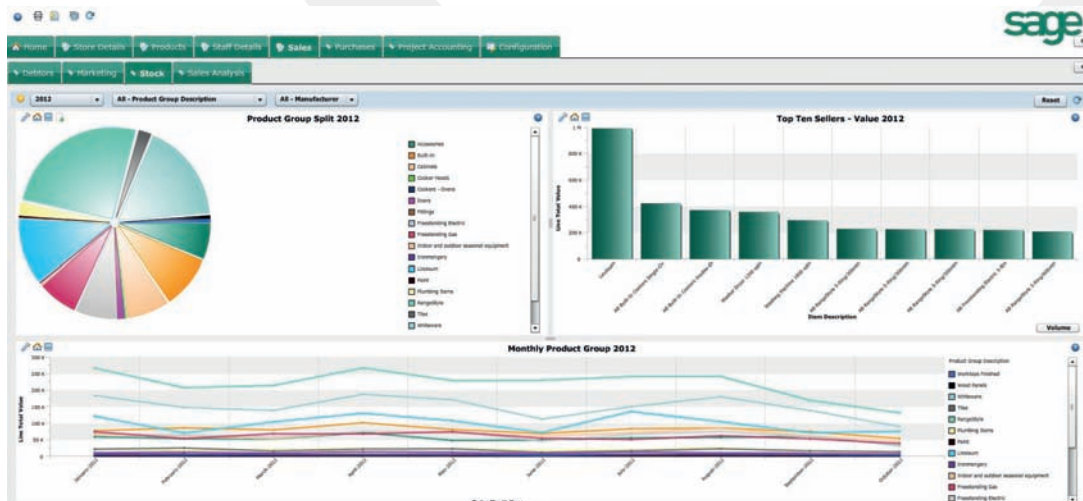


Stay top of the class with the reporting capabilities of Solutions for Accounting's modules for Sage 200.

Sage 200 integrates with a comprehensive range of modules, offered via the Sage Developers' Programme. These allow businesses to configure the software to suit their varying requirements. However, producing comprehensive and timely reports on all of the information held in Sage 200 can prove challenging.

**Common Sage 200 reporting questions include:**

- How do I report on information from across multiple companies in our business?
- How do I schedule or automate reports in my business?
- How do I report on information from all systems in one place?
- How do I view information from all fields from across Sage 200 and Additions?
- How do I provide secure access to users inside and outside the organisation?



### Access all of your data in one place

Panintelligence's business intelligence software can bring together data held in Sage 200 from different companies and present it visually as a set of interactive charts on a dashboard.

The software is accessed via a web browser with no download, allowing users to access it anywhere and at any time. The Panintelligence dashboard can produce reports on data fields from all modules in Sage 200, regardless of whether it's part of the core Sage 200 offering or an add-on module.

Each tab can connect to data from a different company, or different system, allowing you to report on all areas in one place. The charts can also display information in real-time, so that you can analyse the latest data and make informed decisions.

### Automate and schedule reports

Panintelligence's software also provides the ability to schedule reports, so that relevant users receive appropriate information on a regular basis. It can also monitor KPIs, and if they show above or below acceptable levels, the software will automatically alert users via email.

### Secure access for users

The dashboard has several user levels with multiple privileges which give you the ability to restrict access to data held in different areas, tailoring each user's report. With multiple layers of built-in security, key stakeholders - both inside and outside the business - can be kept in the picture at all times.

### For more information about the Panintelligence dashboard, contact

**Solutions for Accounting on 0115 840 5075 or visit [www.solutionsforaccounting.co.uk](http://www.solutionsforaccounting.co.uk)**

## Upgrading from Sage 50 to Sage 200 is child's play for BabyStyle UK Ltd



Solutions for Accounting has helped a distributor and wholesale company target new global markets by installing a more capable software package.

With growing international orders for its prams, pushchairs and nursery furniture - particularly its own Oyster brand products - distribution and wholesale company BabyStyle UK Ltd had outgrown Sage 50 and so sought the help of Solutions for Accounting.

We recommended and installed a new Sage 200 system, which allows data to be centrally accessed by BabyStyle's accounts, customer service, parts and repairs and warehouse teams, and dispatch notes and invoices to be driven directly from the warehouse - building efficiency into the company's practices.

The addition of Spindle Professional that allows automated

email invoicing, has also moved BabyStyle closer to 'paperless' operations.

Andrew 'Rollie' Rollinson, Financial Director of BabyStyle UK Ltd, said: "The switch to Sage 200 and Spindle Professional was a big upheaval but did not mean much downtime.

Representatives from Solutions for Accounting spent time training our staff so that they understood the changes. They didn't just leave us. They came up with solutions to any issues and the transition went smoothly."

**To read the full story of BabyStyle UK Ltd visit [www.solutionsforaccounting.co.uk/casestudies](http://www.solutionsforaccounting.co.uk/casestudies)**



# WE'RE ON YOUR TEAM

Solutions for Accounting provides integrated software to improve the way your business works. From sourcing and installing software to providing training and support, we are on your side.



## Top 10 Sage Business Partner

- Consultancy
- Project Management
- Installation
- Customisation & Modification
- Report Writing
- Training
- Support



"In the four years we have been with Solutions, everything has indicated we made the right decision in moving our Sage support to you"

*Roger Smith, Conveyor Units*

Telephone: 0115 840 5075

Fax: 0115 840 5027

Email: [enquiries@solutionsforaccounting.co.uk](mailto:enquiries@solutionsforaccounting.co.uk)

[www.solutionsforaccounting.co.uk](http://www.solutionsforaccounting.co.uk)

